

★ OFFICIAL ★
**RUBY STAR
SOCIETY**
PATTERN CO.

GEOMETRY QUILT

project sheet



FABRIC BY **RUBY STAR SOCIETY**

SUPPLIES NEEDED

Fabric for piecing the 65" x 73½" quilt top and binding.

BLOCKS

¼ yds



RS5173 14



RS5170 12



RS5173 15



RS5170 14



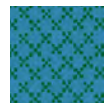
RS5175 13



RS5172 13



RS5171 12



RS5175 16



RS5177 12



RS5177 15



RS5170 13



RS5173 15



RS5171 11



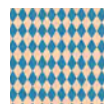
RS5175 14



RS5172 14



RS5171 13



RS5176 13



RS5177 12



RS4109 53



RS4109 51



RS5027 128



RS5027 53M



RS5027 92M



RS5027 64M



RS5027 36M



RS5027 93M



RS5027 63M

QUILT BACKGROUND



RS5027 136

1⅞ yds



RS5175 11

1⅞ yds

BINDING



RS5175 14

⅔ yds

- Batting - at least 75" x 84"
- Thread for piecing and quilting

CUTTING INSTRUCTIONS

From each of the colorful fabrics, cut your fabric into (1) 5 ¼" by width of fabric strip. Using Template A, cut out 8 triangles from each fabric strip.

From the background fabrics, cut your fabric into (12) 5 ¼" by width of fabric strips. Using Template B, cut out (10) pairs of side triangles from each strip. Keep your fabric folded in half (selvages together) to cut out two side triangle pairs at once.

You will have 112 side triangle pairs from each background print.

NOTES ON THE PATTERN

This fabric and quilt were designed as part of the release of Geometry, a collaborative fabric collection by Ruby Star Society.

Fabrics used in our quilt:
Geometry By Ruby Star Society

PIECING INSTRUCTIONS

$\frac{1}{4}$ " Seam Allowance

The geometry quilt is comprised of 4 rows (A, B, C, and D) that are repeated four times within the quilt top. Refer to the diagram on the next page for fabric pairings and how they are assembled into the top.

We recommend sorting the triangles with their coordinating background triangles before you start sewing.

NOTE:

The long edges of the triangles are cut across the bias. Make sure you take your time and not pull or force the fabric as to prevent warping and stretching.

Line up the slanted edge of one of the Template B side triangles with the Template A main triangle. Sew and press seam towards the background fabric. Repeat with the second side triangle to complete a triangle unit.

Repeat until you have made (224) triangle units.

ASSEMBLING THE BLOCKS

Utilizing the diagram on the next page for fabric placement, assemble your diamond blocks by sewing two triangle blocks together, matching the long triangle side to create (112) diamond blocks.

Press seams open or in your preferred method.



FINISHING THE QUILT TOP

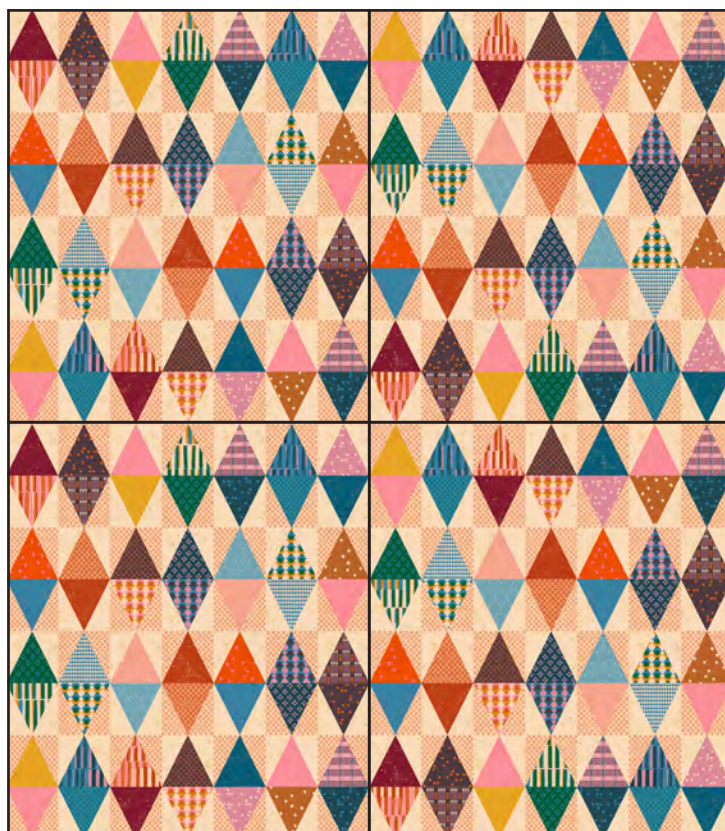
Assemble rows; A, B, C, and D. Repeat to make a total of four of each row. Refer to the diagram on the next page for final row placement, sew together from left to right:

Row A to Row D
Row B to Row C
Row C to Row B
Row D to Row A

Press seams open or in your preferred method.

Repeat a second time and sew the two halves together to complete your Geometry Quilt top.

4 sections, repeated



YOU DID IT! YOU MADE A GEOMETRY QUILT!!

Be sure to use #rubystarsociety and #geometryquilt when sharing your creations so we can see them!



@rubystarsociety

GEOMETRY QUILT

With the release of the Geometry collection, we thought there was no better time to use...geometry, to create a quilt using all triangles that is full of mid-century modern vibes! Follow our layout for a simple yet stunning design.



65" X 73½"

FABRIC REQUIREMENTS

BLOCKS ¼ yds of each print



RS5173 14



RS5170 12



RS5173 15



RS5170 14



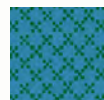
RS5175 13



RS5172 13



RS5171 12



RS5175 16



RS5177 12



RS5177 15



RS5170 13



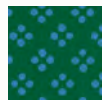
RS5173 15



RS5171 11



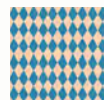
RS5175 14



RS5172 14



RS5171 13



RS5176 13



RS5177 12



RS4109 53



RS4109 51



RS5027 128



RS5027 53M



RS5027 92M



RS5027 64M



RS5027 36M



RS5027 93M



RS5027 63M

QUILT BACKGROUND



RS5027 136
1⅞ yds



RS5175 11
1⅞ yds

BINDING



RS5175 14
⅔ yds

- Batting - at least 75" x 84"
- Thread for piecing and quilting

★ RUBY STAR
SOCIETY ★

moda
FABRICS + SUPPLIES

Copyright 2025 Ruby Star Society. Copying or otherwise redistributing is strictly prohibited. For personal use only.

1"

