

GARDEN SERIES

KATHARINE WATSON

This collection was inspired by the plants growing in my garden and the shapes and symmetry found in nature. The bright colors and bold patterns evoke summer in my mind, and I picture unfurling a quilt on the ground for an outdoor picnic. Each print starts with a hand-carved linocut and embraces the texture and striking shapes that are a signature of printmaking.

moda JANUARY DELIVERY





GARDEN SERIES KATHARINE WATSON



3320 11



3326 11



3322 11



3321 11



3325 11



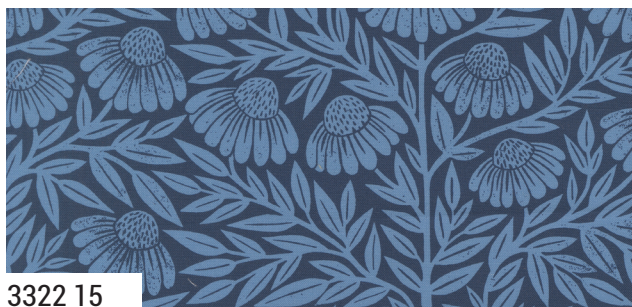
3322 25



3326 15



3325 16



3322 15



3323 16

9900 182 PORCELAIN

9900 461 DUTCH BLUE

9900 236 NAUTICAL BLUE

Bella Solid Coordinates

moda JANUARY DELIVERY

GARDEN SERIES KATHARINE WATSON



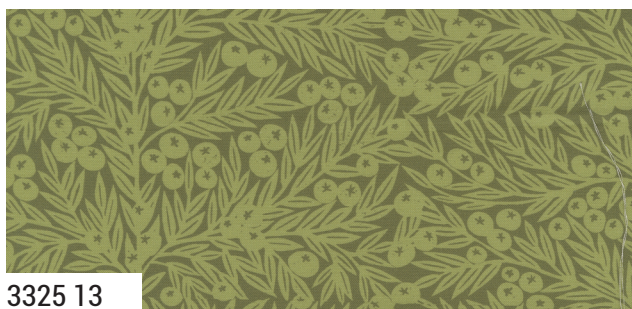
3324 11



3323 11



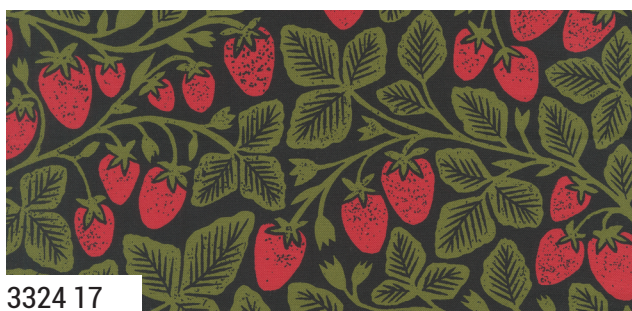
3327 11



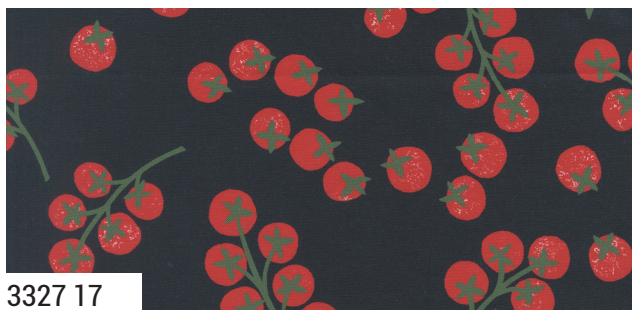
3325 13



3320 17



3324 17



3327 17

3320

Asst.
15

Asst.
10

AB

JR

LC

MC

PP

JANUARY DELIVERY

•17 Prints •100% Premium Cotton

AB includes all 17 skus. JRs, LCs, MCs & PPs include three each of 3322-15 & 25, 3324, 3325-11 & 13 and two each of 3320, 3321, 3322-11, 3323, 3325-16, 3326 & 3327. Bella Solid coordinates are not included in assortments or precuts.

moda 39

9900 344 FERN

9900 175 TERRAIN CACTUS

9900 47 SCARLET

9900 199S SOFT BLACK

Bella Solid Coordinates

GARDEN SERIES KATHARINE WATSON



ES 551RPL Ripple Effect 57" x 71" by Everyday Stitches

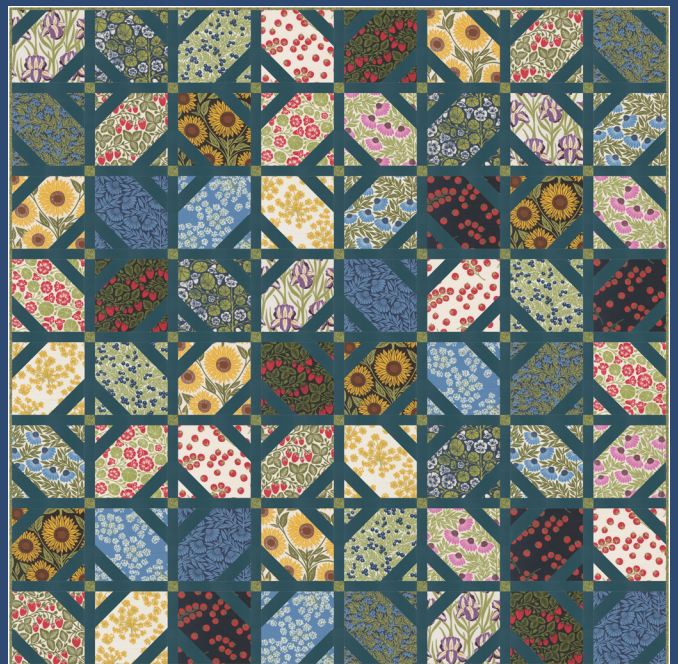
GARDEN SERIES KATHARINE WATSON



CKQ 2402 Skybound 57" x 57" by Copper Kettle Quilt Company



WS 51 Easy Does It 69" x 69"
by Wendy Sheppard



WS 12 Fanciful Floor 63" x 63"
by Wendy Sheppard